

FOR LEASE
Downtown Office Space
3,621 SQ.FT.



915 Fort Street, Victoria BC

Ken Featherby

250 888 1360

kfeatherby@naicommercial.ca

NAI Commercial (Victoria) Inc.

120 - 4243 Glanford Avenue

Saanich, BC V8Z 4B9

www.naivictoria.ca

LOCATION

In the heart of Downtown Victoria, conveniently located between Quadra and Vancouver Street.

Notable neighbors in the immediate vicinity include the Provincial Law Courts, the Land Titles Office, as well as many restaurants and cafes. Located on transit and bike routes.

FEATURES

- HVAC
- Secure parking (up to 5 stalls available)
- Elevator access directly into unit
- Balconies & lots of natural light

SIZE

3,621 SF

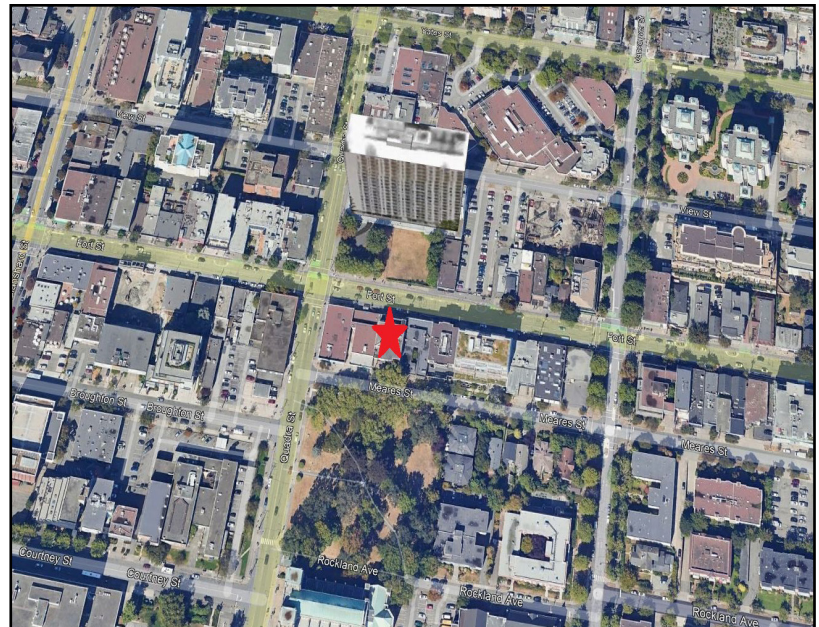
PRICE

Base Rent: \$22.00 psf

Additional Rent: \$18.00 psf (estimated)

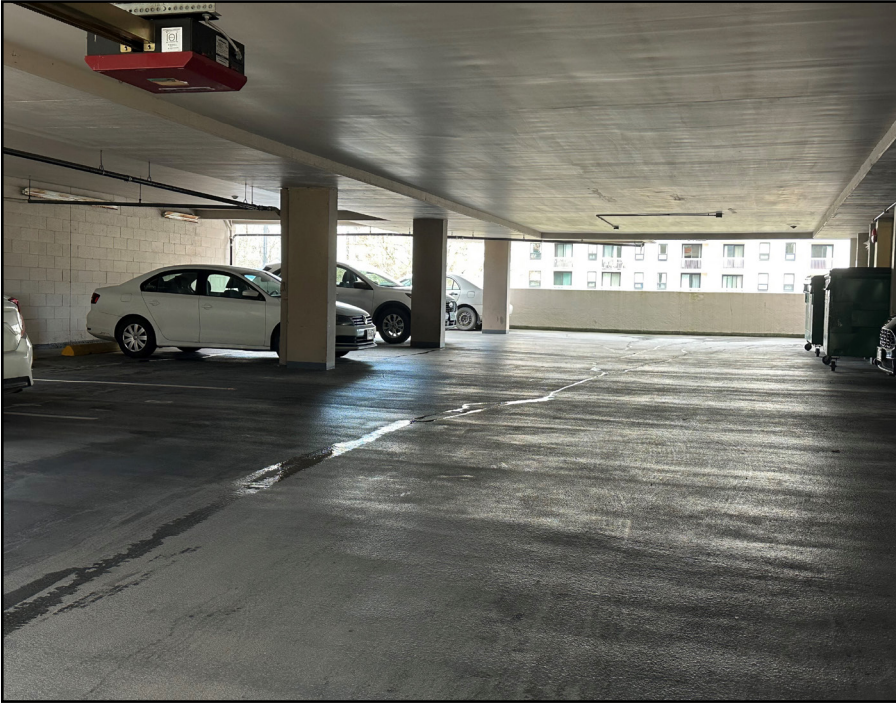
PERMITTED USES

CA-42 Harris Green Commercial District allows for a wide range of uses including but not limited to business & professional offices including medical & dental, financial institutions, insurance & mortgage companies, high tech, and call centre.



Ken Featherby
250 888 1360

kfeatherby@naicommercial.ca



FLOOR PLAN

